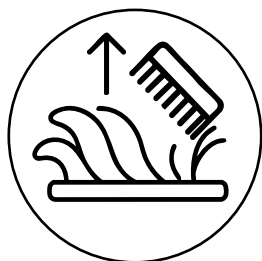


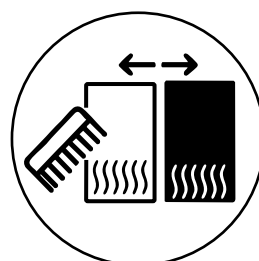
USE AND CARE OF FAUX FUR MATERIALS

Typical characteristics of materials with long or irregular pile.*



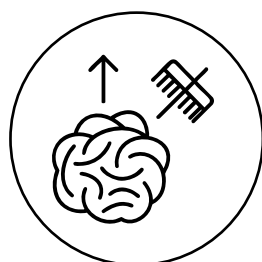
FLATTENING OR "MATTING" OF THE PILE

In frequently used areas (e.g. seats), this is a natural and partially reversible effect – brushing and steam can help.



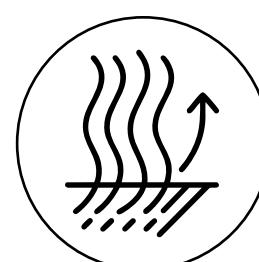
DIFFERENCES IN LIGHT REFLECTION AND VARIATION IN FABRIC SHADE

When brushing or changing the viewing angle, this is a natural characteristic of pile fabrics, not a defect.



FIBER MATTING DUE TO LACK OF PROPER CARE

This is a wear-related effect – it can be minimized with proper use, such as brushing..



KEEPING UNIFORM PILE DIRECTION WHEN CUTTING AND SEWING

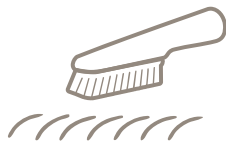
We avoid visual inconsistencies and uneven pile direction in the finished product.

*These are natural phenomena and do not constitute grounds for complaint.**



Furry skin fabrics are an eco-friendly choice that offer a unique look and exceptional comfort. However, they require regular care and gentle brushing.

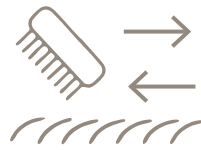
MAINTAINING FRESHNESS



VACUUMING

Vacuum every two weeks or more often. Always vacuum in the direction of the pile (never against it!).

Use a soft-bristled upholstery attachment. Avoid turbo brushes and rotating brushes – they can damage the fabric structure.



REFRESHING AND RESTORING THE PILE

Every few days, gently brush the faux fur to restore its fluffiness.

How?

1. Start by brushing in the direction of the pile.
2. Then lightly brush against the pile (1–2 strokes) to lift the texture.



SMOOTHING THE PILE

For refreshing and eliminating microorganisms, we recommend using a steamer.

How?

1. Direct a stream of steam at the faux fur at a maximum temperature of 100°C.
2. Do not touch the fabric with the nozzle – keep the steamer a few centimeters away.
3. Before and after steaming, gently brush the fabric to separate the fibers.



PLASTIC OR METAL COMB WITH WIDE-SET AND ROUNDED TEETH.

For initial detangling and gently separating matted, long pile.



BRUSH WITH NATURAL, SLIGHTLY FIRMER BRISTLES.

For smoothing and everyday care.

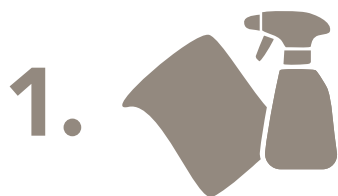


TANGLE-STYLE BRUSH WITH SOFT, FLEXIBLE BRISTLES

For gentle brushing and restoring the fluffiness of faux fur.

CLEANING AND STAIN REMOVAL*

Light soiling



TRY CLEANING
PRODUCTS

oa®

Tougher stains



1. Spray the cleaning product (e.g. OA Stain Eliminator) from a distance of 10–20 cm.



2. Wait 30 seconds.



3. Wipe away the stain with a damp microfiber cloth.



4. Remove excess moisture with an absorbent cloth or paper towel.



5. Leave to dry at room temperature, away from heat sources.



6. Once dry, brush the pile.

What to avoid!



**DO NOT USE
A TURBO BRUSH**

There is a risk of fiber pull-out and damage to the fabric structure



**DO NOT OVER-SOAK
THE MATERIAL**

This may cause deformation, matting of the pile, or staining



**DO NOT USE BLEACH,
SOLVENTS, OR ALCOHOL**

They can lead to damage or discoloration



**DO NOT DRY THE MATERIAL
WITH HOT AIR OR ON A
RADIATOR**

There is a risk of shine and permanent flattening



DO NOT IRON

Faux fur fabrics are sensitive to high temperatures



**DO NOT NEGLECT REGULAR
BRUSHING**

It causes matting of the pile and a deterioration in appearance

ADDITIONAL RECOMMENDATIONS

1. Take care of the area of use – avoid excessive friction and heavy wear.
2. Be mindful of the risk of snags and pulls, which can be caused by zippers and metal elements on clothing.
3. Regularly brush and refresh the faux fur (e.g. with a steamer) to prevent permanent deformation.
4. To eliminate unpleasant odors and lightly disinfect, you can use **OA Aroma Cherry**.



Mindful use = fewer complaints, longer product life, and preserved appearance.